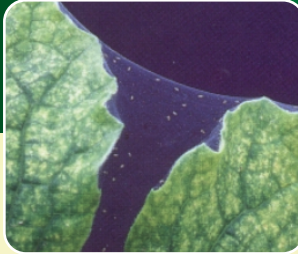


# GUIDELINES FOR Spider Mite Killer

## The Pest:



## The Damage:



## The Solution:



**SPIDER MITE KILLER** contains the predatory mite of red spider mite called *Phytoseiulus persimilis*. This predator is supplied in bottles of 500 or 2000 mixed adults and young. Each predator eats high numbers of red spider mite adults and eggs. They also reproduce near or in the red spider mite colonies.

### IMPORTANT GUIDELINES FOR THE CORRECT USE OF SPIDER MITE KILLER

- **SPIDER MITE KILLER** should only be applied after red spider mite has been observed. The predator needs a temperature of 15°C and over to be active.
- **SPIDER MITE KILLER** is supplied in shaker bottles. These bottles contain the predatory mite, *Phytoseiulus persimilis* and a carrier material to transport the mites in.
- Open the bottle by removing the lid and pour the contents onto the areas where the red spider mite is present. For narrow leaves or tall plants, hang the enclosed **JUST GREEN D-boxes**. Pour some material into these boxes and hang on the plant as near as possible to the top. Red spider mite always migrate to the top of the plant.
- Use the entire product on receipt of it.
- If the product cannot be used straightaway on receipt, store in a fridge at 8-10°C for 1-2 days.
- Do not leave the bottles vertical [like a milk bottle], place them horizontal. This will ensure even distribution of product throughout the bottle.
- It may be necessary to repeat the application of predators for large populations of red spider mite or with new outbreaks.
- **DO NOT USE PESTICIDES** before or during the use of *Phytoseiulus persimilis* without checking if they are harmful to beneficial insects.

*just green*

Websites: <http://www.just-green.info>

<http://www.just-green.com>