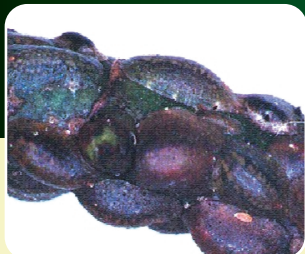




GUIDELINES FOR Scale Killer

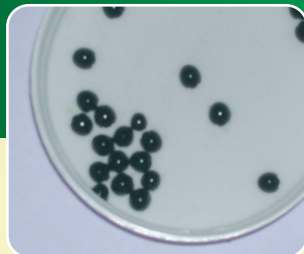
The Pest:



The Damage:



The Solution:



SCALE KILLER contains the predatory beetle; *Chilocorus nigritis*. These shiny black beetles bite a hole in the scale to consume the contents. The larvae of the beetle, which are orange and black will also consume scale insects. This beetle will attack most types of soft or armoured scale insects.

IMPORTANT GUIDELINES FOR THE CORRECT USE OF SCALE KILLER

- **SCALE KILLER** should only be used inside greenhouses or conservatories.
- **SCALE KILLER** should only be introduced when temperatures are above 20°C.
- **SCALE KILLER** should only be used between March and September. They will not reproduce in short days.
- **SCALE KILLER** should not be released close to open windows or doors. Ideally release at the end of the day.
- The rate of use for applying **SCALE KILLER** is 2-5 adults per plant.
- Repeat applications maybe required depending on infestation levels.
- For treating Scale between September and March, it is recommended to use **JUST BUG KILLER**. This contact acting **JUST BUG GUN** product works only by physical action and uses no poison. Spray **JUST BUG KILLER** over the scale insects, it will suffocate them and leave no toxic residues. Scale can usually be brushed off 7-10 days after application. Repeat applications maybe required.

DO NOT USE PESTICIDES before or during the use of **SCALE KILLER** without checking to see if they are harmful to beneficial insects.

just green

Websites: <http://www.just-green.info>

<http://www.just-green.com>